

# StoTherm Classic<sup>®</sup>

Robust external wall insulation system with maximum crack and impact resistance

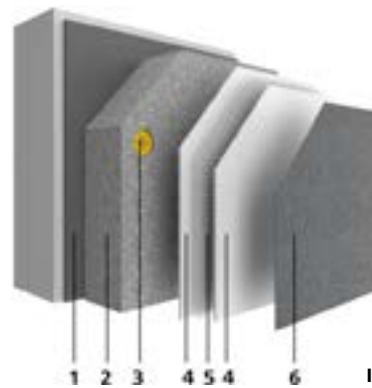
Facade



External wall  
insulation systems

## System advantages

- Highly resistant to mechanical stress
- System reliability – more than 100 million m<sup>2</sup> in use worldwide
- Resistant to cracking thanks to an organic coating build-up
- Highly resistant to microorganisms (algae and fungi)
- Intense, dark colour shades possible
- Cement-free, ready-to-use system components
- Feasible without intermediate coat and paint coat
- Resistant to hail, storms, and hurricanes according to the FIBAG simultaneous test
- Highly weather-resistant
- Permeable to water vapour and CO<sub>2</sub>



- Insulating layer**
- 1 — Bonding
  - 2 — Insulation
  - 3 — Fixing
- Reinforcing layer**
- 4 — Base coat
  - 5 — Reinforcement
- Material layer**
- 6 — Finishing coat
  - 7 — Cladding (optional)



### Areas of application

- New and existing buildings up to high-rise level
- Suitable for passive house standard

### Substrate

- Masonry such as brick, calcium silicate masonry units, cellular concrete, fair-faced masonry and masonry veneer
- Concrete, concrete slab construction (three-layer concrete slabs)
- Timber construction (solid, frame, and panel construction)
- Steel construction (column and framing)
- Existing external wall insulation systems (doubling-up)

### Fixing

- Bonding
- Bonding and fixing with anchors

### Thermal protection

- Insulation board made of EPS up to 400 mm

### Reaction to fire

- Limited combustibility
- Classe B, C in accordance with EN 13501-1, depending on the system build-up
- Additional fire protection measures may be required

### Impact resistance

- High mechanical resistance, up to 15 joules in standard build-up
- Resistant up to 60 joules with highly impact-proof build-up

- Highest hail impact resistance class 5 with the appropriate system build-up
- Ball-impact resistant in accordance with DIN 18032-3
- Resistant to hail, driving rain, and hurricanes according to the FIBAG simultaneous test

### Other properties

- Optional Lotus-Effect® Technology

### Design options

- Organic and silicone resin renders, render with Lotus-Effect® Technology in stippled or rilled textures or as free-style textured render
- Resin brick slips and 3D facade elements made of Verolith granulate
- Natural stone tiles, brick slips, and ceramic tiles possible following agreement

### Colour spectrum

- Tintable in accordance with the StoColor System
- Light reflectance value <25 % possible

### Application

- Cement-free, ready-to-use system components
- No intermediate coat required
- Special protection against algae and fungi with a double coat of paint
- Suitable for application by machine
- QS technology makes it possible to carry out projects during the colder seasons

### Approvals

- The relevant European and/or national approvals apply

**Multiple dwelling unit, Kaltern, IT**  
 Design: Monovolume, Bolzano, IT  
 Sto-expertise: StoTherm Classic®, StoColor Lotusan® G  
 Photo: © René Rillers, Schlanders, IT

### Material layer options



StoSignature



StoEcoshape



StoDeco



StoCleyer B



StoCleyer W

### Finish

- StoSignature (rendered surface)

### Cladding

- StoEcoshapes (prefabricated render elements)

- StoDeco (three-dimensional facade elements), full-surface/partial
- StoCleyer B (resin brick slips)
- StoCleyer W (wood-grain appearance veneer)

### Headquarters

Sto SE & Co. KGaA  
 Ehrenbachstraße 1  
 79780 Stühlingen  
 Telephone +49 7744 57-0  
 Telefax +49 7744 57-2178

### Infoservice

Telephone +49 7744 57-1131  
 Telefax +49 7744 57-2428  
 info.international@sto.com  
 www.sto.com

