

Balconies and access balconies

Repair, protection, and colour scheme

Facade



Floor coating



Concrete repair
and concrete
protection



Renovation, repair, or a new building: StoCretec provides reliable and long-lasting system solutions for balconies and access balconies. Our portfolio ranges from repair mortar and screed to waterproofing, coatings, and surface protection systems. You will also benefit from the Sto Group's expertise regarding facades, interiors, and usable areas.

Contents



Editorial

04 Balconies and access balconies

Building with conscience helps to maintain value

05 Structural fire design in residential construction

Floors for balconies and access balconies



Floor coating

06 Floor coatings for balconies and access balconies

Overview of system solutions

08 First M1-certified balcony coating system

StoFloor Balcony AimS® EB 700

09 Waterproofing systems for balconies and access balconies

Overview of system solutions

10 Elastic coating system for balcony floors

Counteract water damage

11 Rapid coating system for balcony floors

PMMA technology enables one-day coating

12 Colour shade and decorative touches

Combining functionality and aesthetic appeal

Cover photo reference:

St. Gundekar Werk residential building, Ingolstadt, DE

StoCretec expertise: StoFloor Balcony Waterproof DL 300, StoConcrete Repair, StoConcrete Protect V 700

Photo: Duckek

It should be noted that the details, illustrations, general technical information, and drawings contained in this brochure are only general proposals and details which describe the functions. They are not dimensionally accurate. The applicator/customer is independently responsible for determining their suitability and completeness for the construction project in question. Neighbouring works are only described schematically. All specifications and information must be adjusted or agreed in the light of local conditions and do not constitute work, detail or installation plans. The technical specifications and information on the products contained in the Technical Data Sheets and system descriptions/approvals must be observed.



Concrete repair and concrete protection

14 Substrate and screed

Proper preparation makes all the difference

16 Refurbishing balcony parapets

Perfectly matched system solutions

18 Protection and colour for concrete members

Coating systems fulfil dual function

19 StoDesign colour concepts

Balconies and access balconies

Building with conscience helps to maintain value

Refurbishing property is an expensive undertaking and is normally accompanied by noise, dust, and loss of use. Ensuring rapid execution and long-lasting results is in the interest of everyone concerned. The challenge is to enable long-term conservation of value and high quality of living while also taking into account statutory specifications and regional factors.

We offer reliable and long-lasting system solutions for the refurbishment, protection, and design of the balconies and access balconies in your properties. Repair mortars and coatings for the balcony parapet,

screed systems for cantilever slabs, waterproofing and coatings for balcony floors – we will find the perfect solution for your property.

In addition, you will benefit from the entire product range of the Sto Group. Together, Sto and StoCretec provide the housing industry with reliable and comprehensive service and product expertise. And we never lose sight of our ultimate goal – building conscious and durable.

**Residential estate,
Munich, DE**
StoCretec expertise:
StoFloor Balcony Elastic
EB 200, version: design
with scattering of
StoChips 3 mm
Photos: Wolfgang Oberle



Structural fire design in residential construction

Floors for balconies and access balconies

If access balconies and balconies are to be used as escape and rescue routes, they must be planned and constructed in a way to achieve the general fire protection goals:

- Preventing fire from breaking out.
- Preventing fire from spreading.
- Allowing people and animals to be rescued.
- Enabling effective fire-fighting measures.

The EU Construction Products Regulation, the Model Building Code (MBO), and the state building regulations form the legal basis. In addition to the state building regulations, further state and structural standards and directives as well as the version of the German model administrative provision for Technical Building Rules (MVV TB) which is applied to the state in question must be observed. The Deutsches Institut für Bautechnik manages and regularly updates a list of the building regulations and MVV TB introduced in the states.

In accordance to the MBO, access balconies and balconies which are designated as escape routes must not be manufactured using non-combustible

building materials. The state building regulations do not include any clear fire protection requirements for the escape route flooring. However, specialist literature refers to using flooring of at least limited combustibility.

Our StoFloor Balcony coating range offers different system build-ups which meet the "limited combustibility" building material class in accordance with DIN EN 13501-1 regarding non-combustible substrates. An expert assessment conducted by the IBB GmbH provides additional information on the current building regulations on fire protection for balconies and access balconies in residential construction. Moreover, it includes a classification in terms of fire protection of selected balcony coating systems from our range. The classification reports of the tested system build-ups and the expert assessment can be found in our Technical Service Centre at stocretec@sto.com.



Multiple dwelling, Greifswald, DE
StoCretec expertise: StoFloor Balcony Elastic EB 200, strengthening structures with Sto S&P CFK plates
Photo: Maximilian Meisse, Berlin

Floor coatings for balconies and access balconies

Overview of system solutions

System solutions for coating balconies

	Refurbishment and new buildings	refurbishment				
System	StoFloor Balcony AimS® EB 700	StoFloor Balcony Elastic EB 200			StoFloor Balcony Rapid DL 300	
System description	PUR balcony coating system, low-emission, M1*, thick-layer, decorative, cold-elastic	PUR balcony coating system, thick-layer, decorative, cold-elastic			PMMA balcony coating system, decorative, hardens quickly	
Version	Glass	Colour	Design	Glass	Colour	Design
System build-up						
Primer	StoPox GH 700	StoPox 452 EP	StoPox 452 EP	StoPox 452 EP	StoPma GH 300 ²⁾	StoPma GH 300
Scattering		StoQuarz 0.3–0.8 mm	StoQuarz 0.3–0.8 mm	StoQuarz 0.3–0.8 mm	StoQuarz 0.3–0.8 mm ²⁾	
Self-levelling coating						StoPma EB 300 + StoQuarz AS
Coating	StoPur EB 700	StoPur EB 200	StoPur EB 200	StoPur EB 200	StoPma DL 300	StoPma DL 300
Scattering	StoChips		StoChips	StoChips		StoChips
Sealing coat ¹⁾	StoPur VR 100 + Sto Ballotini 180–300 µm	StoPur DL 520	StoPur DL 520	StoPur VR 100 + Sto Ballotini 180–300 µm		StoPma DL 300 transparent
System properties						
Bridging of cracks	■ ■	■ ■	■ ■	■ ■	■	■
Low temperature flexibility	■ ■	■ ■	■ ■	■ ■		
Slip resistance	■ ■	■	□ □	■ ■	■ ■	□ □
Reduction of impact sound pressure level		■ ■				
Cleaning	■ ■	■ ■	■ ■	■ ■	■ ■	■ ■
Quick coating					■ ■	■ ■
Colour shades	■ ■	■ ■	■ ■	■ ■	■	■
Decorative touches	■ ■		■ ■	■ ■		■

* In accordance with the criteria specified by the Building Information Foundation RTS sr

¹⁾ Sealing coat optional, recommended when using StoChips

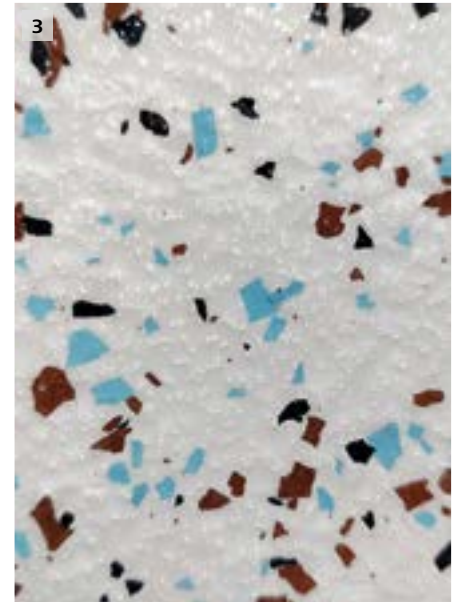
²⁾ StoPma GH 300 primer in two layers, broadcasting of the second layer with StoQuarz 0.3–0.8 mm

³⁾ Dilute with StoFluid AF to 1:1 if necessary.

■ Good

■ ■ Very good

□ □ Slip resistance varies: with loose chips scattering = good, with full scattering = very good



New building			Renovation		
StoFloor Balcony Flexible EB 400			StoFloor Balcony Flexible EA		StoFloor Balcony Paint BF 700
PUR balcony coating system, thin-film, decorative			PUR balcony coating system, single-component, decorative		Acrylate balcony coating system, decorative
Colour	Design	Glass	Colour	Design	Colour
StoPox 452 EP	StoPox 452 EP	StoPox 452 EP	StoPox 452 EP	StoPox 452 EP	StoCryl GL ³⁾
StoQuarz 0.3–0.8 mm	StoQuarz 0.3–0.8 mm	StoQuarz 0.3–0.8 mm	StoQuarz 0.3–0.8 mm	StoQuarz 0.3–0.8 mm	
StoPur EB 400	StoPur EB 400 StoChips StoPur DL 520	StoPur EB 400 StoChips StoPur VR 100 + Sto Ballotini 180–300 µm	StoPur EA	StoPur EA StoChips StoPur EA colourless	StoCryl BF 700
■ ■	■	■ ■	■ ■	■ ■	■
■	■	■	■	■	■
■ ■	■ ■	■ ■	■	■	■ ■
	■	■		■	

1 Colour version
Coating system without design elements.

2 Design version
Coating system with loose or full scattering of StoChips for attractive appearance and slip resistance. Transparent sealing coat makes cleaning easier.

3 Glass version
Coating system with StoChips and sealing coat filled with Sto Ballotini solid glass beads. Elegant appearance, easy to clean, and suitable for foot traffic even in wet conditions: sliding friction coefficient of $\mu > 0.45$ in accordance with DIN 51131.

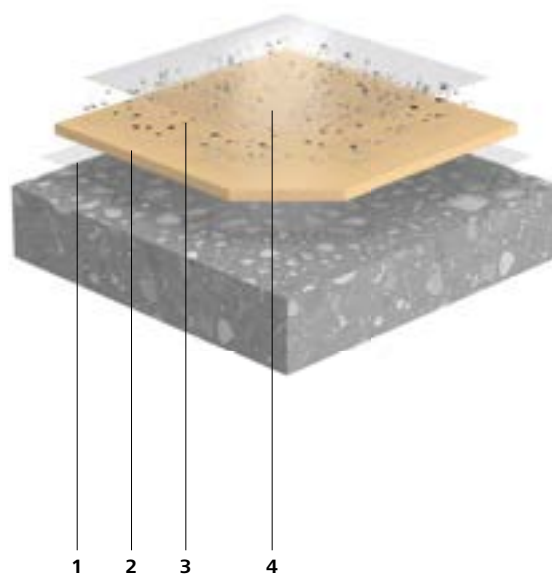
First M1-certified balcony coating system

StoFloor Balcony AimS® EB 700

StoFloor Balcony AimS® EB 700 is the first M1-certified balcony coating system. It offers a unique combination of aesthetic appeal and technical performance. All products of the balcony system are low-emission in accordance with the criteria specified by the Building Information Foundation RTS sr.

The StoPur EB 700 cold-elastic reliably bridges polyurethane resin coating reliably bridges any cracks in the substrate. It ensures that the building fabric is protected against damage from water ingress and harmful substances in the long term. The broad StoPur EB 700 colour shade spectrum and the scattering of StoChips enable many attractive and individual design options.

Sealed with StoPur VR 100, balconies are very easy to clean. This sealing coat is resistant to ageing, UV, and light. This means that the balcony floor stays pristine for a long time. The embedded Sto Ballotini solid glass beads ensure safety even in wet condition.



- 1 — Primer: StoPox GH 700
- 2 — Coating: StoPur EB 700
- 3 — Scattering: StoChips
- 4 — Sealing coat: StoPur VR 100 + Sto Ballotini

Note

The M1 classification of the Building Information Foundation RTS sr defines limiting values for VOC, formaldehyde, and ammonia emissions. Furthermore, the acceptance is evaluated according to the odour associated with the material. The M1 label on the product states that it meets the M1 criteria for emissions and odours. The Scandinavian evaluation method aims to promote the development and use of low-emission building materials and furniture.



Waterproofing systems for balconies and access balconies

Overview of system solutions

Waterproofing systems in accordance with EAD 030350-00-0402

System	StoFloor Balcony Waterproof EB 200			StoFloor Balcony Waterproof DL 300	
System description	PUR balcony waterproofing system, thick-layer, decorative, cold-elastic			PMMA balcony waterproofing system, decorative, crack-bridging, hardens quickly	
Version	Colour	Design	Glass	Colour	Design
System build-up					
Primer	StoPox 452 EP	StoPox 452 EP	StoPox 452 EP	StoPma GH 300	StoPma GH 300
Scattering	StoQuarz 0.3–0.8mm	StoQuarz 0.3–0.8mm	StoQuarz 0.3–0.8mm		
Waterproofing	StoPur EB 200 + StoDivers N	StoPur EB 200 + StoDivers N	StoPur EB 200 + StoDivers N	StoPma EZ 300 + StoDivers N	StoPma EZ 300 + StoDivers N
Self-levelling coating	StoPur EB 200	StoPur EB 200	StoPur EB 200	StoPma EB 300 + StoQuarz AS	StoPma EB 300 + StoQuarz AS
Coating				StoPma DL 300	StoPma DL 300
Scattering		StoChips	StoChips		StoChips
Sealing coat ¹⁾	StoPur DL 520	StoPur DL 520	StoPur VR 100 + Sto Ballotini 180–300µm		StoPma DL 300 transparent
System properties					
Bridging of cracks	■ ■	■ ■	■ ■	■ ■	■ ■
Low temperature flexibility	■ ■	■ ■	■ ■	■	■
Slip resistance	■	□ □	■ ■	■	
Reduction of impact sound pressure level	■ ■				
Cleaning	■ ■	■ ■	■ ■	■	■
Quick coating				■ ■	■ ■
Colour shades	■ ■	■ ■	■ ■	■	■
Decorative touches		■ ■	■ ■		■

¹⁾ Sealing coat optional, recommended when using StoChips

■ Good

■ ■ Very good

□ □ Slip resistance varies: with loose chips scattering = good, with full scattering = very good

Note

The StoFloor Balcony Waterproof EB 200 system has also been tested as a waterproofing layer without nonwoven reinforcement in accordance with EAD 030350-00-0402. This system build-up is also available in the Colour, Design, and Glass versions.

Elastic coating system for balcony floors

Counteract water damage

The StoFloor Balcony Elastic EB 200 elastic balcony coating system provides long-term protection for the building fabric of balcony floors. It prevents substances that can harm the concrete from penetrating the material.

The StoPur EB 200 coating combines UV resistance and resistance to weathering with cold elasticity by using a multiphase polymer matrix (hybrid). The polyurethane resin ensures long-lasting protection from mechanical stress in the summer, permans bridges over cracks that appear as the temperature falls in winter.

The renovation system is suitable for balcony surfaces and access balconies. It opens up the possibility of decorative design with a very large colour range and scattering of coloured acrylate chips. The StoPur VR 100 sealing coat filled with Sto Ballotini makes the surface easy to maintain, UV-stable, and slip-resistant.

The thick-layer system has also been tested as a waterproofing layer that is suitable for foot traffic in accordance with EAD 030350-00-0402. The requirements regarding balcony waterproofing in accordance with DIN 18531-5 for waterproofing layers that are directly or indirectly suitable for foot traffic are fulfilled in full. It has been certified as achieving the highest level of usage category with regard to service life W3 (25 years), climate zones (M and S), and temperature resistance.



Note

External parts of buildings are exposed to moisture. Water causes the most damage to the construction by penetrating into cracks in the building fabric. The deterioration process begins when this is combined with frost or water-soluble, corrosion-promoting substances. This can be prevented with a coating system that withstands mechanical stress as well as the summer heat, but that also has high crack-bridging ability at low temperatures.

Homeowner association (WEG)
Antoniterstraße,
Freiburg, DE
Building owner: home-owner association represented by Ritter Immobilien Treuhaus GmbH, Freiburg
StoCretec expertise:
StoPur EB 200,
StoChips 3 mm,
StoPur VR 100,
Sto Ballotini
180–300 µm

Rapid coating system for balcony floors

PMMA technology enables one-day coating

The StoFloor Balcony Rapid DL 300 and StoFloor Balcony Waterproof DL 300 balcony systems really come into their own when time is of the essence. The entire system build-up can be completed in one day. This enables lockout times during the refurbishment of existing access balconies and balconies to be planned and usage restrictions to be minimised. It also means that coating work can be carried out during brief periods of good weather and at colder times of the year. Thanks to targeted dosing of the StoPma KAT 300 catalyst, the coating system can be applied at substrate temperatures between 0 °C and 30 °C.

The StoFloor Balcony Waterproof DL 300 system provides a waterproofing layer for balconies that is suitable for direct foot traffic. It uses a PMMA/PUR material combination. The polyurethane-elasticised material remains permanently elastic even under extreme environmental influences.

The waterproofing layer in the StoFloor Balcony Waterproof DL 300 balcony system corresponds to the highest level of usage category in accordance with EAD 030350-00-0402, e.g. with regard to service life W3 (25 years), climate zones, and temperature resistance. The requirements regarding balcony waterproofing in accordance with DIN 18531-5 for waterproofing layers that are directly or indirectly suitable for foot traffic are fulfilled in full.

An additional bonus is the StoPma DL 300 transparent sealing coat, which enables visual design with coloured StoChips and improves cleanability. The sealing coat is UV-stable and weather-resistant. For details on vertical surfaces, the StoPma EZ 380 waterproofing layer with StoDivers N nonwoven reinforcement is available in different widths.



**Multiple dwelling,
Kriftel, DE**

StoCretec expertise:
StoFloor Balcony
Waterproof DL 300,
version: design
Photo: Axel Stephan

Colour shade and decorative touches

Combining functionality and aesthetic appeal

Alongside functional requirements, the aesthetic design of construction works is increasingly gaining in importance. This is especially true for prominent facade elements like balconies, which is why selected balcony coatings from StoCretec can be tinted in RAL colour shades and in accordance with the StoColor System. Of course, what applies to balcony floors also applies to balcony parapets and facades. All of the building elements work together visually to give the property a harmonious overall appearance.

In addition to the free choice of colour scheme for the floor coatings, our acrylate chips offer numerous possibilities for variation and customisation. StoChips are available in different colour mixtures and in two sizes for loose or full scattering. Transparent sealing coats enhance the surface of the coating and ensure slip resistance. They are easy to maintain, UV-resistant, and mechanically durable.

Image on right:
Our coatings offer numerous design possibilities.
Photo: Viktoriya@Shutterstock

Note

Balconies become soiled as a result of use, weather, and other environmental influences such as foliage, flowers, and bird droppings. Regular cleaning will preserve the attractive appearance of the balcony on a long-term basis. Small damaged spots will become visible at an early stage.

Prompt refurbishment can be carried out to prevent more serious damage. The functionality of the coating is preserved. If desired, we can provide you with cleaning instructions and usage recommendations for balconies to pass on to your tenants.

Please get in touch with us.

Colour shades and decorative touches for the balcony systems

System	StoFloor Balcony AimS® EB 700		StoFloor Balcony Elastic EB 200 StoFloor Balcony Waterproof EB 200	
	Glass	Colour	Design	Glass
Colour shades				
StoColor System	■	■	■	■
RAL colour shades	■	■	■	■
Decorative touches				
StoChips 1 mm, full scattering			■	■
StoChips 1 mm, loose scattering	■		■	■
StoChips 1 mm, silver, gold, copper, loose scattering	■		■	■
StoChips 3 mm, loose scattering	■		■	■
Structure				
Smooth		■		
Textured	■		■	■



StoFloor Balcony Rapid DL 300		StoFloor Balcony Waterproof DL 300		StoFloor Balcony Flexible EB 400			StoFloor Balcony Flexible EA		StoFloor Balcony Paint BF 700
Colour	Design	Colour	Design	Colour	Design	Glass	Colour	Design	Colour
approx. RAL 1001, 1015, 7023, 7030, 7032, 7035, 7037, 7038, 7040, 7043, further colours on request		approx. RAL 1001, 1015, 7023, 7030, 7032, 7035, 7037, 7038, 7040, 7043, further colours on request		■	■	■	■	■	■
				■	■	■	■	■	■
	■		■		■	■		■	
	■		■		■	■		■	
■	■	■	■	■	■	■	■	■	■

Substrate and screed

Proper preparation makes all the difference

Correct preparation of the substrate has a significant impact on the functionality and durability of the refurbishment. Varying existing coverings and damage must be taken into account.

Concrete and cementitious substrates

The substrate is to be prepared by means of abrasive blasting or sanding. It must be clean, slip-resistant, and dry. Adhesive tensile strength measurements indicate whether the substrate is suitable for the subsequent coating.

Tiles

Tiles and slabbed surfaces have to be removed before the coating is applied and the substrate must be prepared. The mortar bed or screed is often damp. This can cause bubbles to form and the coating to peel off.

Existing coatings

Existing coatings and sealing coats must be fully removed. The substrate must be prepared carefully in order to ensure that the coating is impermeable. Bubble formation or peeling of the coating can be prevented.

Laying a good foundation with screed

Screed levels out unevenness and allows the balcony to be drained by means of slope formation. Polymer-modified cementitious screeds (PCC/RM/RC) have proven their worth in this context. They have excellent application properties, are technically suitable, and can be coated quickly.

Image on right:
St. Gundekar Werk residential building, Ingolstadt, DE
StoCretec expertise: StoConcrete Repair Prime RM F, Prime SM P, Prime TG 203, Prime TS 203, StoConcrete Protect V 700
Photo: Duckek

Overview of screed systems

System/product	StoConcrete Screed Prime TG	StoPox Mörtel standfest	StoConcrete Repair Prime RM F
System description	CEM repair system, polymer-modified, manual	EP mortar, two-component	CEM repair system, polymer-modified, manual, quick-setting
System build-up			
Protection against corrosion	StoCrete TK	StoPox KSH thix	StoCrete TK
Bonding agent	StoCrete TH 200	StoPox KSH thix	
Screed	StoCrete TG 104 or StoCrete TG 108	StoPox Mörtel standfest	StoCrete RM F
Properties			
Rapid further processing	■	■■	■■
Low dead weight		■	
Layer thickness	10–50 mm or 20–100 mm	4–20 mm	2–40 mm
Compatible with StoCretec balcony coating systems	■■	■■	■■
Application with silo mix and conveyor technology	■■		

■ good, ■■ very good



Highlight

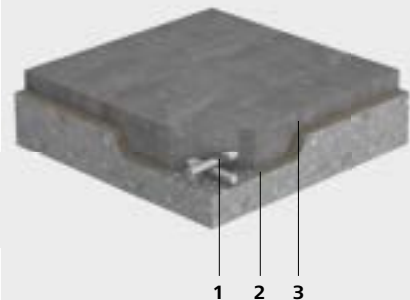
StoConcrete Screed Prime TG

The repair system can be used on horizontal and slightly inclined surfaces both in interiors and exteriors. It can be used to level out unevenness and create inclinations. It is used as a substructure to support a wearing surface in building engineering and is also suitable for surfaces subject to traffic in the non-regulated area. The StoCrete TG 104 and StoCrete TG 108 system mortars are single-component and can be applied very easily thanks to their malleable consistency and high non-sag properties – whether manually or by machine. The extended application time allows sufficient time to compact, smooth, or make corrections to the surface. The two mortars are resistant to frost and de-icing salt. After hardening, they have a high compressive strength.

System properties

- For horizontal and slightly inclined surfaces
- Very easy to apply
- Can be compacted with little effort
- Building material class A1 in accordance with EN 13501-1
- Malleable consistency
- Can be conveyed using a screed pump
- High resistance to ice and salt
- Protection against corrosion and bonding agent available in the system
- Layer thickness in one application cycle:
StoCrete TG 104: 10 to 50 mm
StoCrete TG 108: 20 to 100 mm
- Class R4 in accordance with EN 1504-3

Build-up



- 1 — Protection against corrosion (optional): StoCrete TK
- 2 — Bonding agent: StoCrete TH 200
- 3 — Repair mortar: StoCrete TG 104 or StoCrete TG 108

Refurbishing balcony parapets

Perfectly matched system solutions

Depending on the type and degree of damage, there are a variety of options for refurbishing balcony parapets and floor areas. A balcony is a complex construction, and special solutions are required for repair work. As well as touching up and re-coating the floor, damage to the balcony parapet and surrounding concrete members often needs to be resolved.

Image on right:
"Fuchsbau",
residential and
commercial building,
Munich, DE
Building owner: home-
owner association
represented by
Hammele & Partner
mbH
StoCretec expertise:
StoConcrete Repair
Light LM, StoConcrete
Protect V 700, StoFloor
Balcony Flexible EA
Photo: Isabell Munck

System solutions for concrete repair

System	StoConcrete Repair Classic GM	StoConcrete Repair Prime SM	StoConcrete Repair Prime TG 203
System description	CEM repair system, polymer-modified, manual	CEM repair system, polymer-modified, manual, quick-setting	CEM repair system, polymer-modified, manual or wet-mix process, statically active
Application	Repair mortar for vertical areas and overhead areas	Quick repair mortar for vertical and overhead surfaces	Repair mortar for vertical areas and overhead areas
System build-up			
Protection against corrosion (optional)	StoCrete TK	StoCrete TK	StoCrete TK
Bonding agent			StoCrete TH 200
Reprofiling	StoCrete GM	StoCrete SM StoCrete SM P	StoCrete TG 203
Fairing coat	StoCrete KM	StoCrete SM StoCrete SM P	StoCrete TF 200 or StoCrete TF 204
Properties			
No separate protection against corrosion required		■ ■ ¹⁾	
No bonding agent required	■ ■	■ ■	
Resistance to flow	■	■ ■	■ ■
Compatible with StoCretec balcony coating systems	■ ■	■ ■	■ ■
Layer thickness	6–30 mm	3–40 mm	6–30 mm

■ good, ■ ■ very good

¹⁾ Only when using StoCrete SM P



Highlight

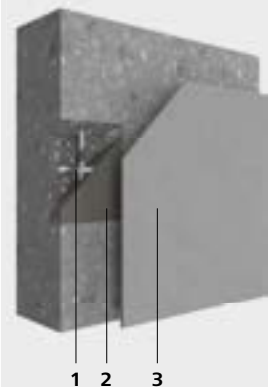
StoConcrete Repair Prime SM

StoConcrete Repair Prime SM is ideal for quickly and easily repairing concrete damage to building elements that are not subject to foot traffic. Reduced drying times and fewer application cycles make it very economical. The StoCrete SM and StoCrete SM P system mortars harden in a very short time and can be reworked quickly. They do not require a bonding agent. Protection against corrosion for damage with exposed reinforcement is also integrated in StoCrete SM P. Both mortars can be used for reprofiling misshaped corners and edges as well as for complete fairing coats. They are virtually shrinkage-free and therefore ensure top renovation results. Very good bond values confirm their durability and reliability.

System properties

- Very high bond strength on concrete
- Very good non-sag properties
- Very good overhead application
- Fast overcoating possible
- Repair mortar and fairing coat – both in one product
- No separate bonding agent necessary

Build-up



- 1 — Protection against corrosion: StoCrete TK
 2 — Repair mortar: StoCrete SM
 3 — Fairing coat: StoCrete SM

Protection and colour for concrete members

Coating systems fulfil dual function

A surface protection system ensures the durability of the refurbished balcony parapet. It prevents the concrete from absorbing water without limiting the water-vapour transmission rate. A barrier against the diffusion of carbon dioxide also protects the parapet against further damage.

As an additional advantage, the coating systems can be tinted in numerous colour shades and allow the surface to be textured in various different ways. In this way, they contribute to the aesthetically appealing overall appearance of the facade.

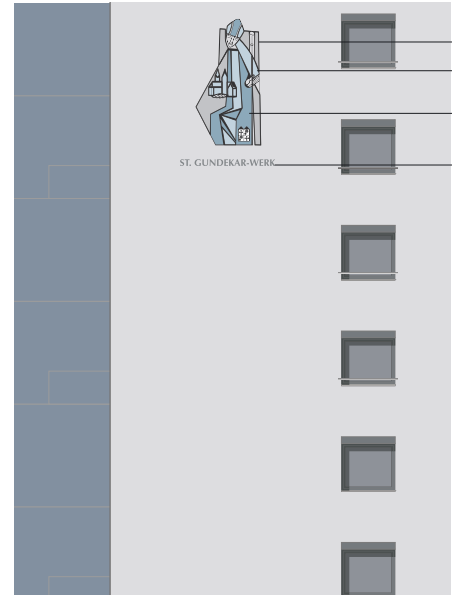
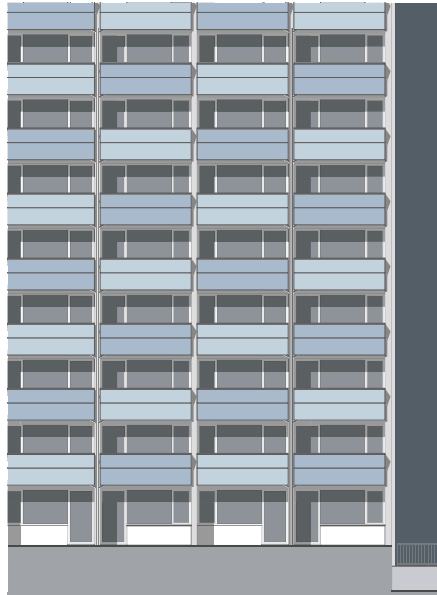
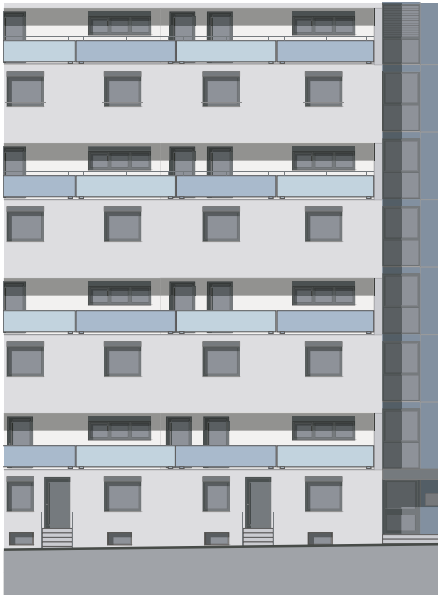
Our highlights: StoCryl V 700 with matt surface and StoCryl V 700 S with Sunblock Technology for maximum colour stability in the case of intense colour shades. The tried-and-tested Dryonic Technology ensures long-term protection for concrete facades. The surfaces dry quickly, which prevents water and harmful substances dissolved in water from penetrating into the concrete. In this way, they are protected against algae and fungal attack – without biocidal film protection. This principle is inspired by nature: it replicates the shell of the fog-basking beetle. Its surface texture ensures that water runs off quickly.

Images on right:
St. Gundekar Werk residential building, Ingolstadt, DE
Colour concept: StoDesign, Stühlingen, DE
StoCretec expertise: StoFloor Balcony Waterproof DL 300, StoConcrete Repair Prime SM, StoConcrete Repair Prime RM F, StoConcrete Repair Prime TG 203, StoConcrete Protect V 700
Photo above: StoDesign rendering
Photo below: Duckek

System solutions for surface protection

System	StoConcrete Protect V	StoConcrete Protect Elastic RB	StoConcrete Protect V 700	StoConcrete Protect Hydrophobic
System description	Acrylate coating system for the protection of concrete structures, rigid	Acrylate coating system for the protection of concrete structures, crack-bridging	Acrylate coating system for the protection of concrete structures, water-repellent	Silane hydrophobisation system for the protection of concrete structures
System build-up				
Primer	StoCryl GQ	StoCryl GQ	StoCryl GW 100	
Coating/hydrophobic impregnation	StoCryl V 100	StoCryl RB	StoCryl V 700 or StoCryl V 700 S	StoCryl HC 100
Properties				
Colour shade variety	■ ■	■ ■	■ ■ ■	
Bridging of cracks		■ ■		
Carbon dioxide impermeability	■ ■	■ ■	■ ■ ■	
Water vapour diffusion permeability	■ ■	■ ■	■ ■ ■	■ ■

■ ■ Very good
■ ■ ■ Excellent



StoDesign colour concepts

StoDesign offers professional colour and material concepts for facades and interiors – from individual buildings to entire cityscape designs. These concepts are developed in close collaboration with you and on the basis of your specifications. Regional contexts and careful consideration of the existing architecture and the function of the building and its

surroundings are taken into account alongside your wishes regarding appearance and effect.

StoDesign and StoCretec work with you to develop technical and design versions, colour shades, and surfaces. Thanks to a computer-animated rendering, you can see what your building project, designed with

StoCretec products, will look like while the work is still in the planning phase and before construction begins.

**Headquarters
StoCretec**

StoCretec GmbH

Gutenbergstrasse 6
65830 Kriftel
Germany

Phone +49 6192 401-0
stocretec@sto.com
www.stocretec.de

Headquarters Sto

**Sto SE & Co. KGaA
Market Development**

Ehrenbachstrasse 1
79780 Stühlingen
Germany

Phone +49 7744 57-1131
info.international@sto.com
www.sto.com

