



Building with conscience.

Sto interior paints

All you need for the perfect wall

Interiors



Interior paints

Our interior paints create a healthy environment in an interior that is free from harmful substances, making it a more pleasant place to be. Our products offer a whole range of performance features to ensure you'll find exactly what you need – whether you're looking for something cleanable, something suitable for sensitive areas, or something that provides heavy coverage.

Hotel Amarin maistra grupa,
Rovinj, HR
Design: STUDIO UP d.o.o., Zagreb, HR
Photo: Siniša Gulić, Rijeka, HR

It should be noted that the details, illustrations, general technical information, and drawings contained in this brochure are only general proposals and details which describe the functions. They are not dimensionally accurate. The applicator/customer is independently responsible for determining the suitability and completeness for the construction project in question. Neighbouring works are only described schematically. All specifications and information must be adjusted or agreed in the light of local conditions and do not constitute work, detail or installation plans. The technical specifications and product information included in the Technical Data Sheets and system descriptions/approvals must be observed.

Contents



Editorial

04 The perfect coating



Interior paints

06 Interior paints

08 The right solution for every wall

10 Application ranges for interior paints

10 Hard-wearing walls for hard-living rooms

12 Outstanding hiding power with one coat

14 Natural paints to help you feel at home

16 Specialist products for exacting requirements

18 Overview of interior paints

20 European standard

The perfect coating

Sto paints don't just look great – they do great things too. We have the ideal solution to suit whatever you need a Sto paint to do.

Gone are the days when all paint did was add a touch of colour. Today's paints can protect surfaces against algae, fungi, mould, and mildew, and can prevent them from heating up. They can reduce harmful substances, and they can get rid of odours. A specialist in coatings for facades and interiors, Sto offers an extensive range of intelligent, innovative, and high-quality paints to suit all kinds of requirements.

This brochure is designed to provide specific product recommendations for five requirements that frequently crop up in projects involving interior coatings. The final few pages contain an overview of the entire product range and provide additional information about special substrates and companion products. Discover a range of paint that adds real value. Bring function, aesthetic appeal, and sustainability together. And do your part in achieving our aim of building with conscience.

Private house in Vaihingen an der Enz, DE

Exterior: StoTherm Vario with an insulation thickness of 160 mm, mineral finishing render, and two coats of the biomimetic facade paint StoColor Dryonic® was the ideal external wall insulation system for meeting the building owners' specific wishes for a feel-good climate and sound insulation. Dryonic® Technology enables targeted water drainage and fast drying after rain, fog, and dew – for truly dry and permanently attractive facades.

Interior: The interior paint StoColor Rapid Ultramatt, which is not affected by glancing light, was applied to bright rooms flooded with light and ultra-smooth substrates. What helped the project achieve outstanding surface results were specifically chosen components such as a

low-texture nonwoven for painting with even absorbency, plus the Sto-FineCoat Roller application tool for a delicate, virtually textureless coating.

Clinic in Nürtingen, DE

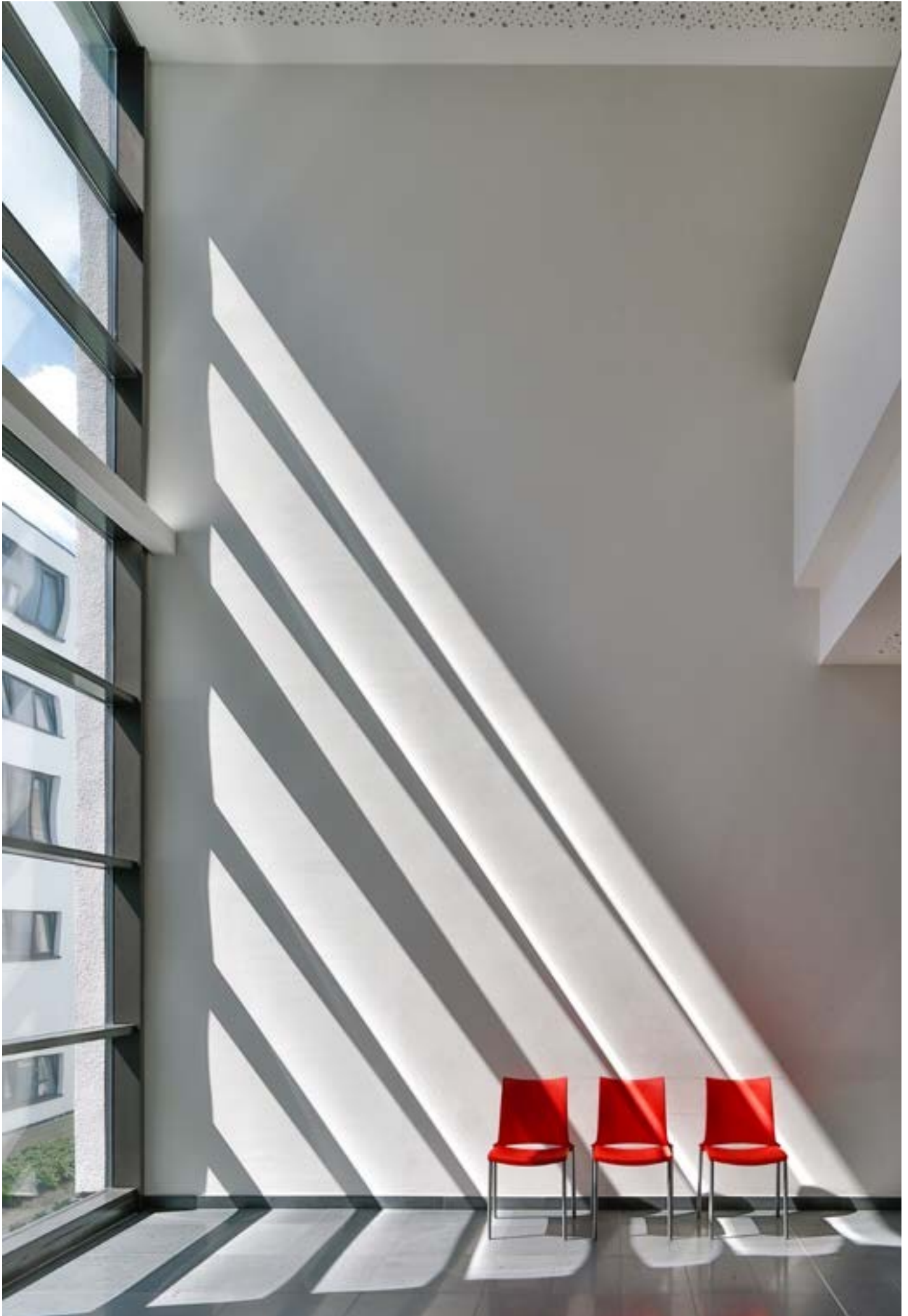
Exterior: A specific request in this project was a mineral system build-up with a silicate finish. Combining StoTherm Mineral and its mineral wool insulation board with StoSil® silicate finishing render and a facade paint on a StoColor Sil silicate base provided the ideal solution.

Interior: StoColor Opticryl was used on the corridors and staircases in these areas. StoColor Opticryl features a texture-retaining, mechanically resistant coating with wet-scrub resistance class 1. The high-quality, preservative-free silicate paint StoColor Sil In was used in patient rooms. The photocatalytically active paint StoColor Climasan, which uses the effects of light to remove odours, was applied to special areas requiring frequent cleaning intervals (such as isolation wards).

Image below:
Detached house, Vaihingen, DE
Design: Stecher architecture firm, Vaihingen, DE
Execution: Hettich GmbH, Vaihingen, DE
Sto expertise: StoColor Dryonic®, StoColor Supermatt
Photo: Martin Duckek, Ulm, DE

Image on right:
Nürtingen clinics, DE
Design: HSP Hoppe Sommer Planungs GmbH, Stuttgart, DE
Execution: Anton Geiselhart GmbH & Co. KG, Pfullingen, DE
Sto expertise: StoColor Sil In, StoColor Climasan
Photo: Martin Duckek, Ulm, DE







Interior paints

08 The right solution for every wall

10 Application ranges for interior paints

10 Hard-wearing walls for hard-living rooms

12 Outstanding hiding power with one coat

14 Natural paints to help you feel at home

16 Specialist products for exacting requirements

18 Overview of interior paints

20 European standard

The wide range of products on offer also provides solutions to specific issues such as preventing mould and mildew without using chemicals, ensuring suitability for allergy sufferers, and ease of decontamination. The range offers the right product for every requirement – giving you the great feeling that comes with finding the perfect solution for every building project.





The right solution for every wall

Sto interior paints offer a large selection of innovative and highly environmentally friendly products to meet every requirement.

A huge colour shade variety

From simple white to on-trend pink, the StoColor System encompasses 800 different colour shades and shades of grey. As if that weren't enough, Sto's Stühlingen headquarters are home to the formulations for several million colour shades that are available to take advantage of – in some cases even decades after they were first used.

Maximum functional diversity

Sto interior paints also create the ideal results for whatever performance feature they are designed to provide – whether they're quick to apply, easy to clean, or made for people with sensitivities, or whether they provide isolation, mould and mildew protection, or resistance to surface disinfectants. Among the highlights of the range is StoColor Climasan – the first interior paint to actively purify inside air under ordinary interior light conditions, completely without sunlight.

Limited tintability

This piece of information means that the paint in question is generally only available in pastel colour shades. The range of colour shades available may be restricted due to factors including the base of a paint (i. e. there is a limit on how much pigment can be added), the binding agent (in the case of silicate paints or high pH values, for instance), and/or pigments (as is the case with StoColor Climasan photocatalysis).

Unlimited tintability

This piece of information indicates that the paint has the maximum colour shade variety. RAL colour shades are available in addition to the 800 colour shades in the StoColor System. Moreover, customised colour shades can be tinted to match

the samples supplied (materials, tiles, or carpet, for example), and any colour shade used in competitor products can be produced.

The cleanest range on the market

Sto is all about building with conscience. It stands for proven quality and consistently upholding the very best environmental standards. Our resource-friendly dispersion silicate products consist of more than 95 % renewable raw materials. We easily meet the criteria stipulated by even the strictest standards and guidelines. Virtually all of our interior paints are also TÜV-certified – which means that they are guaranteed to be free from solvents and low-emission. They also meet the criteria of standard EN 71/3, which means that they could even theoretically be used in the process of manufacturing children's toys. All this makes our products a safe choice in every respect.

Detached house, Stuttgart, DE

Design: Stecher architecture firm, Vaihingen an der Enz, DE

Execution: Maler Schach, Illingen, DE

Sto expertise: StoColor Supermatt

Photo: Martin Baitinger, Böblingen, DE





Our interior paints are:

Functional

Practically every Sto product uses innovative technologies that add real value to its function. In practice, that's worth its weight in gold.

Sustainable

Our products boast all kinds of sustainability credentials – and they are even produced using sustainable methods wherever possible. We take a holistic approach to sustainability that covers ecological, economical, and social perspectives, as well as aspects relating to well-being.

Safe

Our research and development activities ensure that our products and systems never compromise on safety. Every single Sto product is subjected to rigorous testing in our Analytics, Application Technique, and TIAP departments, and we are consistently making improvements to them.

Healthy

Thanks to their healthy materials, the majority of Sto products hold environmental certification from a neutral external body, such as the TÜV. That shows our commitment to building with conscience and establishing a better quality of life.

Systematic

Sto's product range is extensive in every respect, providing everything that professionals need to work systematically – from substrate treatments to finishes.

Efficient

We focus on how our products will be used right from the start of their development. The quick and easy workability of our products and systems is a winning feature that saves users time and money.



Hard-wearing walls for hard-living rooms

StoColor Opticryl family

The acrylate paints from the StoColor Opticryl family with wet-scrub resistance class 1 are easy to clean and resistant to surface disinfectants. Thanks to their high resistance and durability, they can withstand high levels of mechanical stress without any issues. Not only that, but they are also ideal for textured surfaces, nonwovens, and textured wall coverings.

We offer four gloss variations to suit all kinds of design requirements: StoColor Opticryl Gloss,

StoColor Opticryl Satin, StoColor Opticryl Satinmatt, and StoColor Opticryl Matt – and each is available with every container option.

We even offer a special service to hospitals, retirement homes, and doctor's surgeries: we will check whether the disinfectant you use is compatible with a particular Sto interior paint.

PPS lecture theatre, Aachen, DE
Design: HH+F Architekten Hentrup Heyers + Prof. Fuhrmann, Aachen, DE
Execution: Anstrich Heinen GmbH, Heinsberg, DE
Sto expertise: StoColor Opticryl
Photo: Peter Hinschläger, Aachen, DE





Kärnten Therme Spa, Warmbad-Villach, Villach, AT
Design: DI Markus Pernthaler Architekt ZT GmbH, Graz, AT
Execution: Freundl GmbH, Villach, AT
Sto expertise: StoColor Opticryl
Photo: Christian Schellander, Villach, AT

At a glance

StoColor Opticryl family

The higher the gloss level, the more hard-wearing and cleanable the surface.

- Wet-scrub resistance class 1
- Hiding power class 2
- Available in four gloss levels.
- Unlimited tintability in accordance with the StoColor System
- Very high whiteness
- TÜV-certified and externally monitored
- Extremely hard-wearing and durable
- Texture-retaining
- Extremely easy to clean and resistant to surface disinfectants
- Excellent flow properties
- Good hiding power



Outstanding hiding power with one coat

StoColor Rapid family

Quick-action paints with first-class hiding power. The one-coat paints in the StoColor Rapid family are among the best-selling professional interior paints – and for good reason. Just one coat is all that is needed in many cases, even on dark substrates. This makes these paints exceptionally quick to apply, resulting in a huge amount of time and money saved.

StoColor Rapid

This classic choice among quick-action interior paints is perfect for rough substrates such as wood-chip wallpaper or render.

StoColor Rapid Ultramatt

This dead-matt interior paint with excellent flow properties is ideal for extra-smooth and flat-plastered substrates in glancing light. The filling properties of StoColor Rapid Ultramatt make it practically impossible to detect textural differences, even in unforgiving glancing light, provided the substrate been prepared appropriately.

Image on left:

Mediathek media centre, Oberkirch, DE
Design: wurm + wurm architekten ingenieure gmbh, Bühl, DE
Execution: Rolf Baudendistel, Renchen, DE
Sto expertise: StoColor Rapid
Photo: Johannes Vogt, Mannheim, DE

Image on right:

Ronald McDonald House, Tübingen, DE
Design: BRT Engineering, Hamburg, DE
Execution: Gottfried Mack Stukkateur GmbH, Pliezhausen, DE
Sto expertise: StoColor Rapid
Photo: Isabell Munck, Stuttgart, DE





At a glance

StoColor Rapid

- Wet-scrub resistance class 2
- Optimum hiding power class 1
- Dead-matt
- Good filling capacity
- Ideal for rough substrates
- Extremely smooth application
- Limited tintability in accordance with the StoColor System (pastel range)

StoColor Rapid Ultramatt

- Wet-scrub resistance class 2
- Optimum hiding power class 1
- Dead-matt
- Not affected by glancing light
- Very easy to touch up
- Ideal for extra-smooth and flat-plastered substrates
- Limited tintability in accordance with the StoColor System (pastel range)



Natural paints to help you feel at home

StoColor Sil In, StoColor Sil Mineral, and StoColor Calcetura

We spend around 20 hours a day in enclosed spaces. So the air in these areas needs to be particularly clean. Small quantities of preservatives from products that contain them have the potential to get into rooms, especially during the drying phase or as a result of diffusion. People with sensitivities may be susceptible to negative reactions from even the tiniest amounts of these substances. Sto provides a complete portfolio of interior silicate products ranging from silicate paint and silicate render all the way through to silicate primer. The high pH value of these products provides natural protection against mould and mildew. In addition, walls painted with silicate-based products not only absorb humidity but can also release it again. As the silicate products are free from plasticisers, they also prevent what is known as black dust from forming on walls and ceilings.

Our eco-friendly interior paints are made exclusively from resource-conserving raw materials – at least 95 % of which are obtained from natural or renewable resources – and are free from preservatives. This allows people to benefit from an improved ambient interior climate and an environment with fewer harmful substances – in applications such as nurseries, schools, hospitals, retirement homes, and private residences.

StoColor Sil In

StoColor Sil In's numerous certificates and seals of approval – including, first and foremost, the natureplus® eco-label – demonstrate this product's unique advantages when it comes to health and environmental compatibility. The high pH value gives this matt silicate paint with a mineral appearance extremely good hiding power and enables it to inhibit mould and mildew.

StoColor Sil Mineral

A matt, mineral silicate emulsion paint, StoColor Sil Mineral offers excellent coverage that makes it a low-cost alternative to StoColor Sil In.

StoColor Calcetura

This lime paint is ideally suited to mineral substrates and loam plaster. That's why its strengths particularly come to the fore in applications involving the protection of historical buildings and monuments.



SchreyöggBau show home, Memmingen-Dickenreishausen, DE

Design: SchreyöggBau GmbH, Ottobeuren, DE

Sto expertise: StoCalce Functio, StoColor Sil In

Photo: Martin Duckek, Ulm, DE

At a glance

StoColor Sil In

- Wet-scrub resistance class 2
- Hiding power class 1
- Dead-matt
- Limited tintability in accordance with the StoColor System/AC fans
- Awarded the natureplus® eco-label
- Natural protection against mould formation
- Diffusion-open

StoColor Sil Mineral

- Wet-scrub resistance class 3
- Hiding power class 2
- Dead-matt
- Natural protection against mould formation
- Limited tintability in accordance with the StoColor System (pastel range)

StoColor Calcetura

- Wet-scrub resistance class 3
- Hiding power class 3
- Dead-matt
- Mould and mildew-inhibiting



Specialist products for exacting requirements

StoColor Climasan, StoColor Isol, StoColor Isol W, and StoColor Puran Satin

For specific requirements and areas of application, professionals need genuinely special solutions. In hospitals, doctor's surgeries, laboratories, food processing companies, restaurants, and private residential construction, and in applications involving poorly ventilated areas and problematic substrates, Sto's functional paints provide quick, easy solutions for virtually any requirement.

StoColor Climasan

StoColor Climasan is the first interior paint to actively purify inside air under ordinary interior light conditions, completely without sunlight. This is the result of a photocatalytic effect in which every beam of light that hits the paint's surface activates a catalyst that in turn removes harmful substances and odours. This creates noticeably improved air quality wherever the paint is used – in kitchens, smoking rooms, and more besides.

StoColor Isol and StoColor Isol W

Isolating paints for substrates with potent content. The solvent-containing interior paint StoColor Isol

with wet-scrub resistance class 2 and the water-based paint StoColor Isol W with wet-scrub resistance class 1 fight nicotine, soot, lignin and water stains.

StoColor Puran Satin

The hard-wearing PU gloss paint StoColor Puran Satin demonstrates resistance to surface disinfectants, weak acids and alkaline solutions, and mineral lubricants, making it a perfect choice for even the most sensitive areas and problematic applications.

We offer a special service to hospitals, retirement homes, and doctor's surgeries: we will check whether the disinfectant you use is compatible with a particular Sto interior paint, so you can be confident in your choice.





Florence-Nightingale hospital, Düsseldorf, DE
 Design: temak projektmanagement- und projektsteuerungs gmbh, Trier, DE
 Execution: Hüsson Farbe Gestaltung Bautenschutz GmbH, Düsseldorf, DE
 Photo: Guido Erbring, Cologne, DE

At a glance

StoColor Climasan

- Wet-scrub resistance class 2
- Hiding power class 1
- Degradation of organic harmful substances and odours
- Diffusion-open
- Dead-matt
- Limited tintability in accordance with the StoColor System (pastel range)
- TÜV-certified and externally monitored
- Effective degradation of harmful substances
- Effectively reduction of odours – as confirmed by the Fraunhofer Institute
- Interior lighting is sufficient: no need for UV light or sunlight
- Ideal alternative to air fresheners
- Excellent hiding power

StoColor Isol/StoColor Isol W

- Wet-scrub resistance class 1 (StoColor Isol W)
- Wet-scrub resistance class 2 (StoColor Isol)
- Hiding power class 2
- Limited tintability in accordance with the StoColor System (pastel range)
- Diffusion-open
- High whiteness
- Excellent isolating properties on problematic substrates
- Non-yellowing
- Low residual stress
- Good hiding power
- Low-odour

StoColor Puran Satin

- Wet-scrub resistance class 1
- Hiding power class 2
- Low-emission and nonyl phenol-free
- Mid sheen
- Unlimited tintability in accordance with the StoColor System
- TÜV-certified and externally monitored
- Extremely resistant to mechanical stress
- Resistant to surface disinfectants, weak acids, alkaline solutions, and mineral lubricants
- Colour stability



Overview of interior paints

Product	Product properties								solution				Design
	Binding agent group	Wet-scrub resistance class (in accordance with EN 13300)	Hiding power (in accordance with EN 13300)	Gloss level (in accordance with EN 13300)	Seal of approval	Glancing light	Texture-retaining	Preservative-free	Resistant to surface disinfectants	Suitable for use in food areas	Mould and mildew-inhibiting	Colour range	
Premium paints													
StoColor Titanium	Acrylate	1	1	Dead-matt		■			■ ■	■ ■		■ ■	
Hard-wearing paints													
StoColor Opticryl Matt	Acrylate	1	2	Dead-matt		■	■ ■		■ ■	■ ■		■ ■	
StoColor Opticryl Satinmatt	Acrylate	1	2	Mid sheen		■	■ ■		■ ■	■ ■		■ ■	
StoColor Opticryl Satin	Acrylate	1	2	Mid sheen		□	■ ■		■ ■	■ ■		■ ■	
StoColor Opticryl Gloss	Acrylate	1	2	gloss		□	■ ■		■ ■	■ ■		■ ■	
Rapid paints													
StoColor Rapid	Acrylate	2	1	Dead-matt		■			■ ■			■	
StoColor Rapid Ultramatt	Acrylate	2	1	Dead-matt		■ ■	■		■ ■			■	
Eco-friendly paints													
StoColor Sil In	Silicate emulsion	2	1	Dead-matt		□			■ ■	■ ■	■ ■	■ ■	
StoColor Sil Mineral	Silicate emulsion	3	2	Dead-matt		■			■ ■		■ ■	■	
StoColor Calcetura	Lime	3	3	Dead-matt		■			■ ■		■ ■	Natural white	

■ ■ excellent ■ good □ to a limited extent

Wet-scrub resistance		Contrast ratio (hiding power)		Sto-White Shades Collection		
Class 1	<5 µm at 200 strokes	Class 1	≥99.5	Classification in accordance with consumption and spreading rate in m ² /l	AW 11	Yellowish aged white
Class 2	≥5 µm and < 20 µm at 200 strokes (abrasion-resistant in accordance with the old DIN 53778 standard)	Class 2	≥98 and <99.5		AW 15	Greyish aged white
Class 3	≥20 µm and < 70 µm at 200 strokes (washable in accordance with the old DIN 53778 standard)	Class 3	≥95 and <98		STH 01	Approx. RAL 9010
Class 4	<70 µm at 40 strokes	Class 4	<95		STH 02	Approx. NCS S 0500 N
Class 5	≥70 µm at 40 strokes				STH 04	Approx. RAL 9016

Product	Product properties							solution				Design
	Binding agent group	Wet-scrub resistance class (in accordance with EN 13300)	Hiding power (in accordance with EN 13300)	Gloss level (in accordance with EN 13300)	Seal of approval	Glancing light	Texture-retaining	Isolating	Resistant to surface disinfectants	Suitable for use in food areas	Mould and mildew-inhibiting	

Standard paints

StoColor In	Acrylate	3	1	Dead-matt		■	□						■ ■
StoColor Basic	Acrylate	3	2	Dead-matt		□							■

Functional paints

StoColor Puran Satin	Polyurethane	1	2	Mid sheen		■	■ ■		■ ■	■ ■			■ ■
StoColor Climasan	Acrylate	2	1	Dead-matt		□	□		■				■
StoColor Metallic	Acrylate	1		Metallic		□							■
StoColor Isol W	Acrylate	1	2	matt		■		■ ■					■
StoColor Isol	Acrylate	2	2	Dead-matt		□		■ ■					■
StoColor Silent	Acrylate	3	2	Dead-matt		□							■ ■
StoColor Silent N	Acrylate	1	2	matt		□							■

■ ■ excellent ■ good □ to a limited extent

European standard

Basic information

EN 13300 and surface stress

European standard EN 13300

European standard EN 13300 describes the grading classification of wall and ceiling paints in interiors. The main criteria for this classification, which is binding throughout Europe, are described briefly below:

Classification in accordance with EN 13300

Wet-scrub resistance class	Class 1–5
Hiding power	Class 1–4
Gloss level	Dead-matt to gloss

Wet-scrub resistance

Class 1	<5 µm at 200 strokes
Class 2	≥5 µm and <20 µm at 200 strokes
Class 3	≥20 µm and <70 µm at 200 strokes
Class 4	<70 µm at 40 strokes
Class 5	≥70 µm at 40 strokes

Hiding power

Class 1	≥99.5	
Class 2	≥98 and <99.5	
Class 3	≥95 and <98	
Class 4	<95	

Gloss level

Designation	Measurement angle	Reflectometer value
Gloss	60°	≥60
Mid sheen	60°/85°	<60/≥10
Matt	85°	<10
Dead-matt	85°	<5

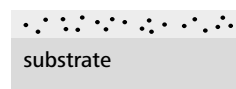
Surface stress – the difference between matt and gloss

The following basic rule applies when using intense colour shades: the glossier the paint, the more hard-wearing and cleanable the surface. Matt paints that are exposed to significant mechanical strain often develop spots that look greasy and transform into shiny, mirror-like areas. This is referred to as pigment breakdown. The images below explain how this happens and why gloss paints are not affected by pigment breakdown.



Matt interior paints

Mechanical stress presses down on exposed pigments and extenders, resulting in changes to the colour shade and gloss level.



Silk gloss interior paints

The binding agent layer protects the integrated pigments and extenders from mechanical stress.



Tested for harmful substances, low-emission, and free from

- solvents
- plasticisers

This label confirms that the relevant products have been tested by an independent test institute such as the TÜV and have been classified as safe.



Tested for harmful substances, resource-friendly, low-emission, and free from

- preservatives: 0.000 %
- solvents
- plasticisers

In addition to the confirmation that the relevant products have been tested for harmful substances by an independent test institute, this label confirms that they are free from preservatives.



TÜV certification

The TÜV certifications “Low-emission, tested for harmful substances, production monitored” and “Low-emission, nonyl phenol-free, production monitored” are credible, user-friendly credentials for industrial products and are not linked to any particular association or manufacturer. The entire process of certifying a product, from the production facility inspection to laboratory tests, is performed by the TÜV SÜD group, which also regularly conducts spot checks. Its testing covers more than 100 harmful substances including preservatives, aldehydes, hydrocarbons, acids, heavy metals, and terpenes.

All Sto interior paints that have been tested by the TÜV SÜD group are guaranteed to fulfil the criteria that classifies them as low-emission, tested for harmful substances, nonyl phenol-free, with monitored production, and free from substances that contribute to “black dust” on walls.



natureplus®

The natureplus® seal of quality is awarded to products that meet the very strictest criteria relating to the environment, health, and functionality. The International Association for Sustainable Building and Living uses it to promote environmental and health protection in construction projects. Interior paints with the natureplus® seal of quality are free from preservatives and made exclusively using resource-friendly raw materials, 85 % of which are from sustainable and/or mineral origins.

Headquarters

Sto SE & Co. KGaA Market Development

Ehrenbachstrasse 1
79780 Stühlingen
Germany

Phone +49 7744 57-1131
Fax +49 7744 57-2428
infoservice.export@sto.com
www.sto.com

StoWerkstatt

International Project
Support Hub
153-157 Goswell Road
Clerkenwell
London EC1 7HD

Phone +44 20 7222 2221
werkstatt@sto.com
werkstatt.sto.com

Your Contact

